

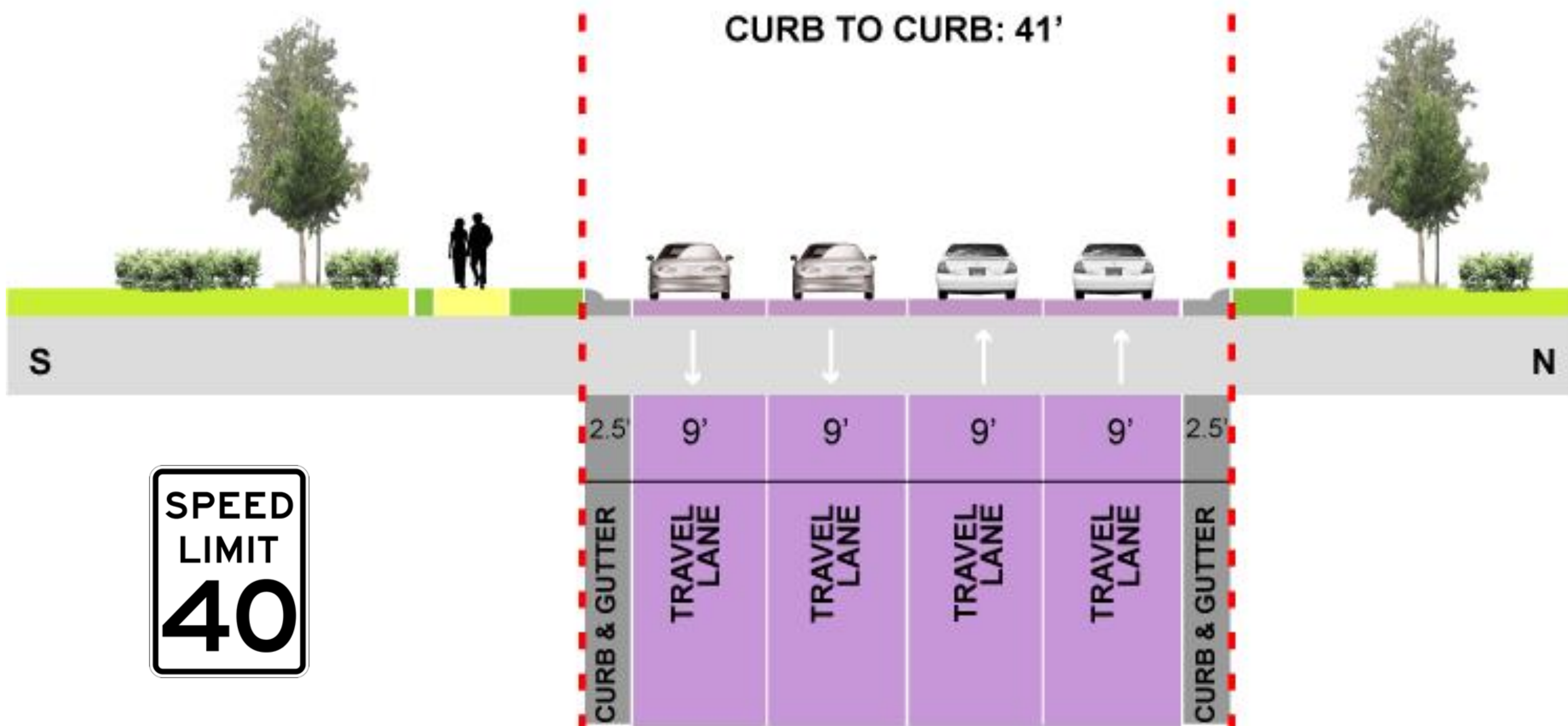
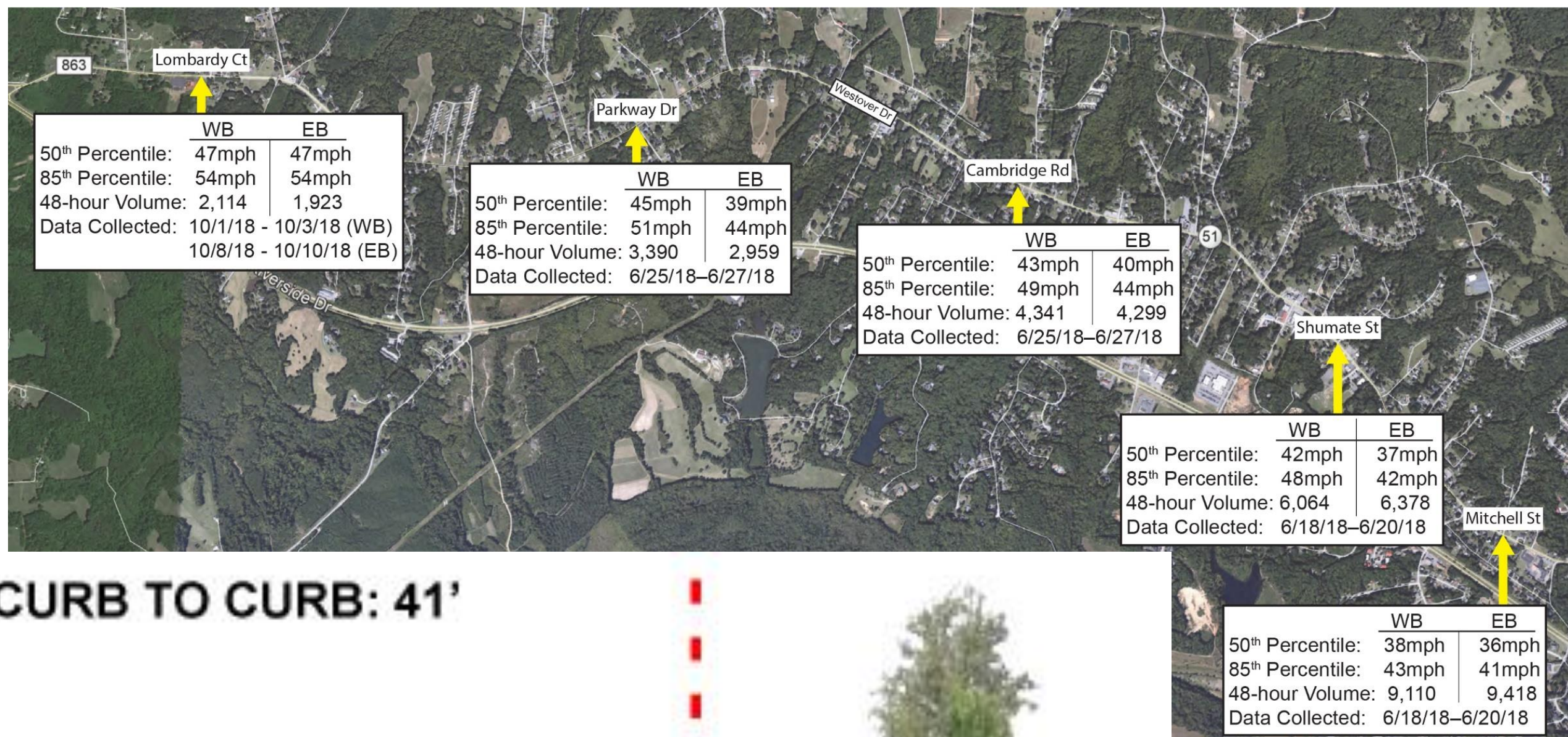
# Westover Drive Lane Study

## Project Goal

To increase safety for all modes of transportation: bicycles, motorists, and pedestrians.

## Existing Conditions

- Excessive Speeding
- High Accident Frequency
- Bicycle Level of Service - D



## Proposed Conditions ~ Buffered Bicycle Lanes

- Decrease Speed Limit
- Reduced Accidents
- Bicycle Level of Service - A

